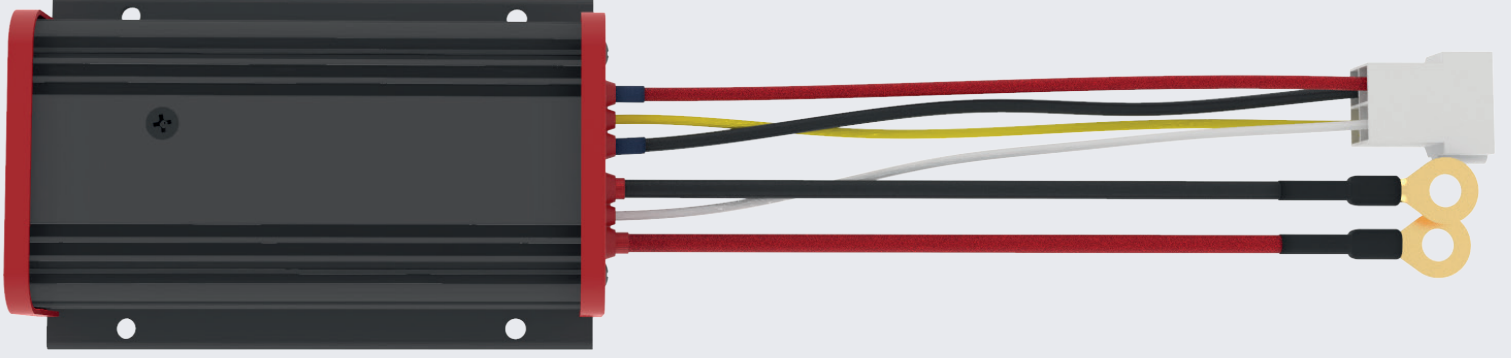


BESTAS

HERCULES / BDD-0KW5-13V5-NI-BSTA

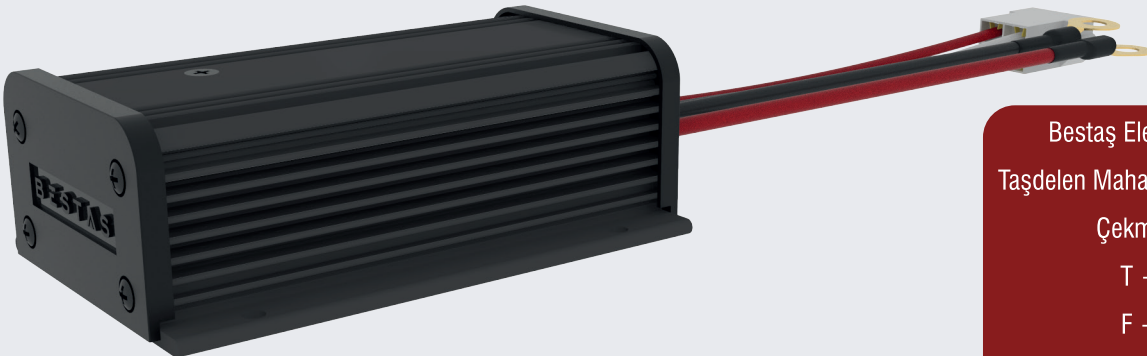
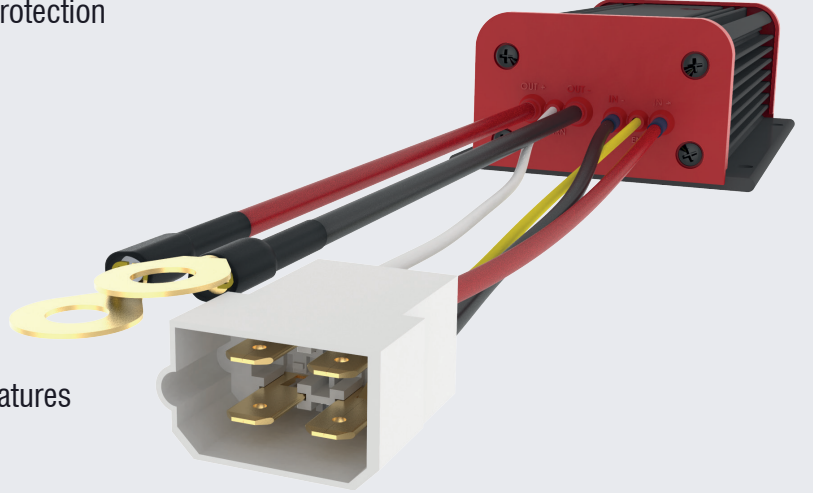
DC-DC CONVERTER FOR ELECTRIC VEHICLES

500W DC-DC Converter Designed for Electric Vehicles, with CC/CV Output Features, Compact Size, and Wide Operating Range



Features

- Automatic Shutdown Feature in Case of Unstable Output
- Output Short-Circuit Protection, High Current Protection
- Low Input Voltage Warning Feature
- Low/High Output Voltage Warning Feature
- Reverse Polarity Connection Protection
- Activation (KL15) Input and Warning Output Features
- Parallel Connection Capability



Bestaş Elektronik Optik San. ve Tic A.Ş
Taşdelen Mahallesi Sırrı Çelik Bulvarı No:6 34788
Çekmeköy / İstanbul / Türkiye
T + 90 (216) 427 10 20
F + 90 (216) 427 11 40
www.bestas.com.tr

BESTAS

HERCULES / BDD-0KW5-13V5-NI-BSTA

DC-DC CONVERTER FOR ELECTRIC VEHICLES

500W DC-DC Converter Designed for Electric Vehicles, with CC/CV Output Features, Compact Size, and Wide Operating Range



Input Voltage Range	35VDC~60VDC
Efficiency	≥%90 @40A Output
DC Output Voltage	Nominal 13.8V(Automatically Adjusted Voltage Depending on the Current)
Maximum Output Current	40A
Maximum Output Power	500W
Soft Start Time After Activation	100ms
Delayed Shutdown Feature	Shutdown 5 seconds after the activation signal is lost
Temperature Protection	High Temperature Warning, Automatic Shutdown and Restart Capability
Output Regulation Method	CC/CV
Sleep Current	Below 0.1mA
Operating Temperature Range	-40°C~ +85°C

Technical Drawing

